

How to deliverSM



How to deliver your best



When you're working to succeed for your customers and yourself, you look to work with an experienced partner. For more than 25 years, Roadnet Technologies has delivered the industry's leading fleet management solutions—solutions that help distribution and service companies just like yours gain greater results in service, productivity and profitability than ever before. In fact, you'll find our products in daily use at more than 3,400 locations worldwide, optimizing the management of over 200,000 vehicles and field resources. Through decades of innovation and growth, Roadnet Technologies remains driven by a single goal—to help your business accomplish what you do best.



Take your operations to the next level

You know your business can do more. And our **Roadnet® Transportation Suite** will help you achieve those goals. With this comprehensive set of integrated solutions your transportation staff can quickly take control over every aspect of your order-to-customer process.

Are you concerned about off-the-shelf software that doesn't meet your expectations? The Roadnet Transportation Suite is a proven, industry-leading product that has been road-tested for strategic, tactical, and operational superiority. Each of our product modules, whether deployed individually or as a suite for optimized results, is highly configurable in its design. In short, this solution adapts to the way you work, conforming to your current operations.

What do you stand to lose? Constant guesswork, inconsistent routing, lost drivers, and missed stops. But, what you can gain is even greater:

- Decreased fuel and transportation costs
- Increased profitability
- Improved customer satisfaction
- Improved safety and risk management
- Enhanced strategic planning capabilities
- Instant access to accurate delivery and service costs
- Optimized resource utilization and driver management

What about support? We provide dedicated customer service—24/7, 365 days a year. Our support helps your people use the system at its full potential and maximize your investment. Plus, our Roadnet University offers specialized training options for your staff.

Now, let's take a closer look at the outstanding tools that the Roadnet Transportation Suite offers you...



“By far, Roadnet Technologies had the most comprehensive system that fit our operation to a T. The most unique thing about them is that you can be literally any kind of industry and they have a way to cater to your needs by providing a solution that works for your particular business—so that you don’t have to change the way you work.”

Antonio Brown, Corporate Transportation Manager
The Eastern Bag & Paper Group



Territory Planner®

THE BIG PICTURE ON PRODUCTIVITY



TERRITORY PLANNER AT A GLANCE

This sophisticated, easy-to-use strategic solution can help you:

- Optimize all existing delivery, service, and sales routes
- Reduce transportation costs by efficiently allocating resources
- Automate your strategic rerouting process, reducing time and management involvement needed to complete the planning cycle
- Balance capacities and workloads
- Explore “what-if” scenarios
- Plan for growth, holidays and seasonal swings
- Create service policies based on volume of business
- Capture daily reports and vital historical data
- Improve customer service, including exceptions
- Maximize oversight and evaluation
- Serve as a depot planning tool



Fixed routes? Today, they are anything but. Even the most predictable static routes can eat away at your company’s profits over time through customer changes, backtracking, and off-route stops. Pinpointing and fixing these leaks takes more than guesswork and sticky notes. But, where are you going to find the time and the resources to manually reroute an entire territory or region?

What you need is a reliable, powerful tool that can give you the ability to analyze, modify and optimize your entire distribution, service and sales operation from the top down—based on your company’s unique criteria and historical information. What you need is Territory Planner.

An industry first

Territory Planner is widely recognized as the premier strategic tool for planning, balancing, and managing route-sales, pre-sales, service and standard route operations.

As an enterprise or stand-alone software application, Territory Planner’s robust framework and mapping network capabilities provide the complete functionality you need to take on even the most complex rerouting analysis. Although it can function as a stand-alone solution, Territory Planner can share all of your customer information with other Roadnet Transportation Suite applications without the need for re-entering data.

ROI in just months

Just enter all relevant information—customer and operational details such as available drivers and vehicles, days, open/close times, preferred time windows, volume and customer locations—and Territory Planner’s analytical engine generates an optimized territory solution, strategically designing each route and stop sequence to meet your customers’ scheduling needs. You can also explore strategic options for enhanced customer service and cost efficiencies through Territory Planner’s “what-if” scenario projections, assess your ability to manage expanded territories without expanding your fleet, and reconfigure your current territories and routes in advance to handle seasonal fluctuations. You can even determine the actual cost of each delivery stop down to the penny. You’ll quickly see the positive impact to your bottom line as well. On average, in just six months or less, Territory Planner can deliver a return on investment—and that’s just for starters.

Always accountable

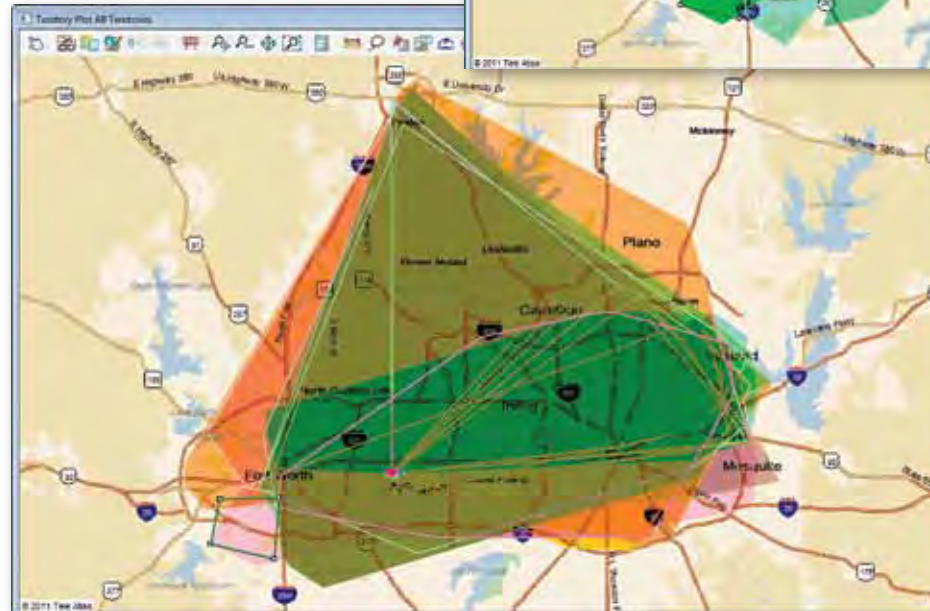
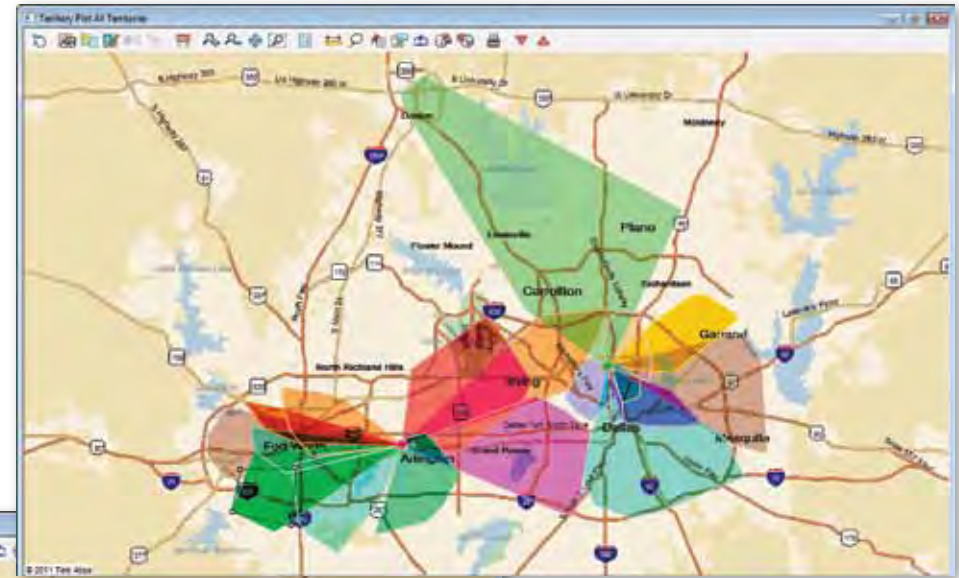
To keep you informed on all aspects of territory management, Territory Planner offers complete accountability through a range of easily generated reports that cover

“It does not matter what process or system you are currently using, when it comes to optimizing route structure, Territory Planner will produce better results. Not only will you be able to improve route structure quickly, Territory Planner will more efficiently maintain your territories.”

Lee Beup, Marketing Director
Nixon Uniform Service & Medical Wear

every aspect of your sales, service and distribution operations, including:

- Territory Cost Report
- Territory Distance Report
- Territory Summary Report
- Territory Exception Report
- Driver Itinerary



↑ **Problems? No problem!** Territory Planner’s powerful algorithms deliver an optimized territory solution that is easily configurable to meet your company’s changing needs. The sample territory’s routes have now been balanced to avoid overlap and lock in savings.

Territory Scoreboard

Territory Scenario Score: **87**

Equipment Options | Score Weighting Factors Adjust

Territory Statistics - 19 Territories

	Totals	Min	Max	Avg	Variance	Pct Var(%)
Cases	72742.00	3595.00	4041.00	3828.53	446.00	11.0
Weight	24962.00	987.00	1807.00	1313.79	820.00	45.4
Sales Rev	561115.00	44850.00	57381.00	50050.68	12531.00	21.8
Srvc Time	696:45	34:41	36:37	36:37	02:56	10.2
Locations	1,279	60	77	67	17	22.1
Stops	1,279	60	77	67	17	22.1
Est. Run Time	123:27:14	06:13:24	06:43:47	06:29:51	00:30:23	7.5
Avg Stem Dist	245.83	4.65	21.56	12.94	16.91	78.4

Geometry

Total Area	1580.73
Overlap Area	109.42
Avg Centroid Dist	5.04
Centroid	32.758268 -97.010242

Extent of Territories

Lat/Lng	
Lower Left	32.599000 -97.475500
Upper Right	33.252800 -96.590600
Distance	67.7 by 57.9

↪ **Score big and win big with Territory Planner’s Territory Scoreboard**, which provides a full set of metrics to document the effectiveness of your current routing strategy—as well as potential savings through optimization. As the sample to the left demonstrates, Territory Scoreboard provides the detailed benchmarks you need to explore different planning scenarios.

↑ **See what you’re missing in your planning.** Territory Planner instantly analyzes and graphically maps any existing route overlaps that cause costly inefficiencies in your daily operations network—so that you can prepare and launch a successful strategy. In this sample map, the dark area indicates where all routes are overlapping in a single territory over the course of one day.

Roadnet®

THE SMARTER WAY TO ROUTE YOUR DAY

ROADNET AT A GLANCE

This highly flexible routing and scheduling solution will help you:

- Dramatically reduce miles driven, fuel spending and driver overtime to ensure greater profitability
- Measure driver performance on a daily basis with clearly defined itineraries, manifests, maps and directions
- Maximize driver and equipment productivity while following new government regulations
- Meet and exceed customer service expectations by quickly turning exceptions into opportunities
- Assess available costs for greater savings by drilling down to actual costs per stop, per mile, or per unit of measurement
- Work smarter by investing fewer hours in your route planning and more time in strategic forecasting
- Capture daily reports and important historical data



It's never the same road—in managing transportation operations, you live it, breathe it, and know it. Every day, you deal with a whole new set of challenges—each one with the potential to throw off your stops in a thousand different ways, driving up costs and driving down service. So why not give yourself a competitive edge? For a growing number of leading transportation companies, every day starts with Roadnet.

Make the most of your routes

This versatile enterprise or stand-alone solution gives your routers an effective, tactical routing tool to optimize daily delivery and service operations in just minutes, not hours. Roadnet offers you the ability to transform today's orders into tomorrow's routes, locking in the highest number of efficiencies to improve customer service while reducing costs. In fact, Roadnet typically delivers ROI within its first year of deployment, with users consistently cutting their delivery costs by 10 to 20 percent.



Integrating Roadnet with your current system is painless—it integrates with existing order entry and host systems, as well as with all other Roadnet Transportation Suite applications. Then, by tapping into its advanced algorithms and custom “street-level” routing passes, you can quickly generate any number of routing assignments. It's easy to account for whatever variables you determine, including road conditions, vehicle and driver availabilities, time window requirements, start/close times and maximum route duration. In doing so, Roadnet allows you to maintain more consistent standards for your daily operations, by providing your drivers and staff with clear performance expectations for scheduling and sequencing.

As a result, overages due to driver overtime and excessive stop times instantly become a thing of the past. Overall resource utilization increases. Customer service dramatically improves. In short, your operation delivers more while driving less, every day.

“Companies who do not have a routing solution will never get to the next level—whatever that level is for them. If you are looking to control costs and become more customer-friendly, you need it—no questions asked.”

Eric Cohen, Vice President of Logistics
WAXIE Sanitary Supply

Just the information you need

Creating and monitoring benchmarks for your daily operations couldn't be easier with Roadnet. Choose from a broad selection of progress reports (or create your own) to track every aspect of your business and the costs involved. Standard reporting features include:

- Driver Manifests, Maps, Directions and Itineraries
- Route Summary Statistics
- Off-Day Delivery Exception Report
- Resource Utilization Report
- Customer Delivery Cost Report
- Time Window Exception Report
- Actual versus Planned Reports by Route and by Stop

ACTUAL VS. PLANNED - ROUTE SUMMARY

Session Date: Wednesday, November 17, 20XX - Delivery
Scenario: 102

Route: 5 - FT WORTH		Helper (Planned): No		Helper (Actual): No							
Driver Information		Depot Service: 00:00		Comments:							
Driver 1:											
Driver 2:											
	Stops	Total Time	Service	Travel	Distance	Gallons	Cases	Weight	Break	Total Cost	Cost/ Gallons
Planned:	17	08:01:39	06:53:59	01:07:40	38.4	810.00	194.00	7,315.00	00:00:00	245.00	0.40
Actual:	17	08:01:39	06:53:59	01:07:40	38.4	810.00	194.00	7,315.00	00:00:00	245.00	0.40
Variance:	0	00:00:00	00:00:00	00:00:00	0.0	0.00	0.00	0.00	00:00:00	0.00	0.00
% of Planned:	0.0%	0.0%	0.0%	0.0%	0.0%	0.0%	0.0%	0.0%	0.0%	0.0%	0.0%

	Stops	Total Time	Service	Travel	Distance	Gallons	Cases	Weight	Break	Total Cost	Cost/ Gallons
Planned:	51	44:38:26	39:11:11	05:27:15	220.4	4,353.00	1,359.00	53,653.00	00:00:00	1,399.00	0.32
Actual:	51	44:58:26	40:11:11	05:27:15	220.4	4,571.00	1,345.00	53,511.00	00:00:00	1,428.00	0.31
Variance:	0	00:00:00	01:00:00	00:00:00	0.0	218.00	-14.00	-142.00	00:00:00	30.00	-0.01
% of Planned:	0.0%	0.0%	2.0%	0.0%	0.0%	5.0%	-1.0%	-0.3%	0.0%	2.1%	-2.7%

↑ Are you operating on plan—and on budget? One of Roadnet's most vital progress reports, Actual vs. Planned gives you and your company's management a precise route-by-route comparison of successes and shortfalls. As this sample screen shows, actual stops are 100 percent on plan; however, wide variances in service and travel time are also evident. As a result, you quickly can determine the real costs per stop on each route—and even assess the particular costs per unit on a given load. With this level of detail at your fingertips, you can easily create a more accurate plan for tomorrow.

The screenshot displays the Roadnet Transportation Suite interface. The top window shows a list of active routes with columns for Route Number, Description, Color, Number of Stops, Distance, Cases, Load Cases, Departure Time, Complete Time, Travel Time, Service Time, Total Time, Total Time (Graph), Missed TWs, Cost/Dist, Cost/Stop, Cost/Cases, and Total Cost. Below this, a detailed view for Route 256 (38) FT WORTH (Active) is shown, including a sequence of stops with their descriptions, arrival times, TW Graphs, cases, service times, and departure times. A map view on the right shows the route path through the city of Mesquite, with numbered stops and a color-coded route line.

↔ How can you deliver results tomorrow? With Roadnet, you can plan for tomorrow's success today—with the unique ability to access a top-down view of every intended delivery route. As this sample screen shows, Roadnet lets you view all of the particulars of your active next-day stops, including equipment, travel times, and exceptions. In addition, you can zero in on the specific details of any route itinerary, and even generate a dynamic map view of that route that clearly pinpoints each stop.

MobileCast®

COMMUNICATE RESULTS



MOBILECAST AT A GLANCE

Powerful but flexible, MobileCast will help you:

- Track all vehicles in real time against their individual routing plans
- Reduce costs due to excessive mileage, overtime and deadhead miles
- Improve driver accountability and efficiency by eliminating service delays and delivery errors
- Manage by exception for new levels of dispatch productivity
- Promote customer service by anticipating and avoiding delivery delays through on-the-fly rerouting while providing precise ETAs
- Improve communications among all members of your transportation team in the office and the field
- Gather and centralize customized delivery data
- Build profitability through optimized transportation management



You've set up your distribution and service territories. You've optimized your routes. Still, how can you be sure that, once they are on the road, your drivers are focused on your plan? With MobileCast, you can. Created by Roadnet Technologies, MobileCast offers your company a highly configurable mobile resource management solution, complete with tools, service, sales, and support—providing value from day one.

Now you see it

With advanced mobile resource management capabilities, MobileCast empowers your team by providing them with the tools they need to ensure the

highest levels of productivity and customer service. Unlike AVL (Automatic Vehicle Location) packages, MobileCast lets you step outside the four walls of your dispatch location in real time to see where all of your vehicles actually are—and if they are following their respective routing plans. Out in the field, MobileCast offers a range of flexible communication options for your drivers that can be scaled to your present needs—and reconfigured easily as your operations grow. With its open architecture, MobileCast integrates with your current routing, scheduling, host systems or GPS as well as other modules of the Roadnet Transportation Suite.

Manage by exception—really

For your office dispatch operations, MobileCast is the ideal solution to manage overload. With its “intelligent” tracking overview (which can be set to your specifications), MobileCast gives your dispatchers the ability to manage by exception—that is, to see and respond only to those vehicles that are off-plan. Exception reports can also be generated, detailing all exceptions associated with a trip, including unplanned stops and route path deviations. In addition, dispatchers can:

- Communicate directly with field resources for real-time dispatch of new stops
- Receive real-time updates on route status, including all details and variances
- Capture actual stop arrival, departure and service time information
- Receive proactive notification of service failures or late deliveries
- View vehicle space availability for backhauls
- View or print route and driver performance reports
- Automatically integrate operational data captured in the field back into the planning system—to create an even more accurate plan in the future

"I'm certainly a fan of Roadnet Technologies. They offer great 24/7 support on all of their products. Best of all, their solutions are all about providing better service to customers. If you use them, your business will benefit."

Brian Shavor, Director of Operations
Paul W. Marks

- Disseminate projected and actual delivery information in real time to provide immediate updates

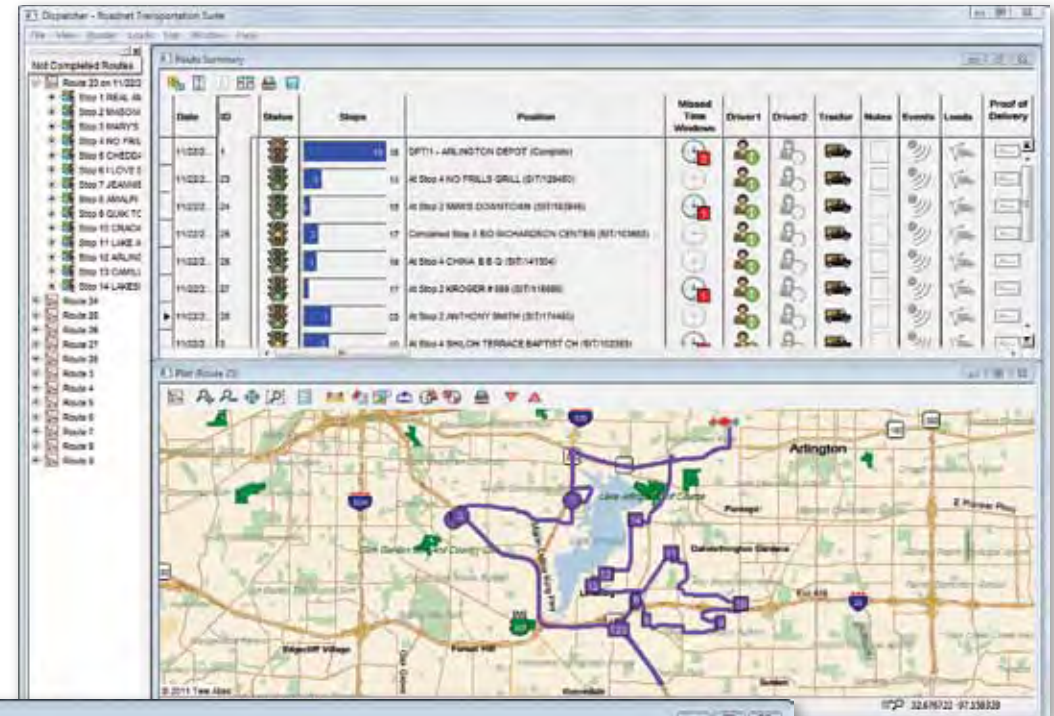
MobileCast ensures that dispatching can work more efficiently to enforce your plan throughout daily operations.

Driving excellence

Your field resources will welcome the addition of MobileCast as a "no-hassles" tool to help boost performance and productivity. With its real-time mobile communications and GPS capabilities, MobileCast eliminates lost time due to unclear directions, routing detours, or customer complications. In addition, you can choose from a wide range of wireless devices that provide such critical capabilities as:

- Barcode scanning
- Line-item reconciliation
- Signature capture
- Picture text messaging
- Instant receipt of new delivery instructions and alerts
- Directions to the next destination point from either the previous stop or based on current vehicle location

Your field resources can take advantage of MobileCast's powerful but flexible GPS-based communication options, including devices that provide an electronic manifest showing each successive stop and related instructions. Upon arrival, your driver simply clicks the "arrive" button to notify dispatch of his status before proceeding on his route. ➡



Type	Actual Stop	Planned Stop	Location Id	Name	Address Line1	City	Planned Arrival	Projected Arrival	Actual Arrival	Planned Departure	Projected Departure	Actual Departure	Av
	1	1	163417	REAL AMERICAN FOODS, INC	2901 S CRAVENS RD	FT WORTH	06:42 CST		06:07 CST	07:16 CST		06:41 CST	
	2	2	140334	MASONIC HOME & SCHOOL	3800 S WICHITA ST	FT WORTH	07:23 CST		06:48 CST	08:12 CST		07:37 CST	
	3	3	143470	MARY'S FUNNEL CAKES	3401 E REED AV	FT WORTH	08:13 CST		07:36 CST	08:43 CST		08:08 CST	
	4	4	129450	NO FRILLS GRILL	4914 S LITTLE RD	ARLINGTON	08:51 CST		08:16 CST	09:47 CST	10:21 CST		
	5	5	130615	CHEDDAR'S CASUAL CAFE	4830 LITTLE RD	ARLINGTON	09:52 CST	10:29 CST		10:05 CST	10:40 CST		
	6	6	134016	I LOVE SUSHI	4104 W GREEN OAKS-STE 301 BLVD	ARLINGTON	10:07 CST	10:41 CST		10:30 CST	11:04 CST		
	7	7	132670	JEANNIE'S BAKERY PLUS	4388 W GREEN OAKS BLVD	ARLINGTON	10:30 CST	11:04 CST		10:57 CST	11:31 CST		
	8	8	123253	AMALFI ITALIAN RESTAURANT	5743 SW GREEN OAK AV	ARLINGTON	10:59 CST	11:33 CST		11:09 CST	11:43 CST		
	9	9	158734	QUICK TO FIX FOODS-SAMPLE	3006 W OAK COVE	ARLINGTON	11:16 CST	11:50 CST		11:29 CST	12:03 CST		
	10	10	133046	CRACKER BARREL #203	4303 S BOWEN RD	ARLINGTON	11:34 CST	12:08 CST		12:21 CST	12:55 CST		
	11	11	161779	LAKE ARLINGTON BAPTIST CH	2912 W LITTLE RD M	ARLINGTON	12:28 CST	13:02 CST		13:44 CST	14:18 CST		
	12	12	117427	ARLINGTON PLAZA	6801 W POLY WEBB RD	ARLINGTON	13:50 CST	14:24 CST		14:46 CST	15:19 CST		
	13	13	116756	CAMILLA'S CATERING	6407 E MOUNTAIN LAKE CT	ARLINGTON	14:47 CST	15:22 CST		15:01 CST	15:35 CST		

➡ With MobileCast, staying on top of your en route delivery operations couldn't be easier. MobileCast lets you manage by exception by monitoring the progress in real time, instantly letting you know if a particular driver is off-route and missing time windows. In addition, a powerful mapping feature helps you compare individual route plans versus actual routes taken.

Roadnet[®] Telematics

REDUCE RISK. SECURE SAVINGS.

ROADNET TELEMATICS AT A GLANCE

This advanced, full-spectrum solution will help you:

- Assess and improve driver behavior
- Reduce idling
- Diagnose engine health
- Optimize vehicle maintenance
- Track mileage precisely
- Monitor any off-plan event



Roadnet Telematics is a road-proven GPS-based telematics solution that has helped commercial fleets save literally millions in operating costs, ranging from insurance claims to roadside assistance. Through GPS-based, onboard monitoring technology, Roadnet Telematics tracks a critical spectrum of vehicle operating and usage parameters, such as miles driven, engine faults, idling time, seatbelt usage and much more. The result is a clear picture of your fleet's risk, productivity and maintenance status—and a clear path toward improvement.

- Reduce fleet maintenance costs and optimize lease management
- Support cost-reduction initiatives by controlling fuel consumption
- Reduce injuries, vehicle damage and claims costs while helping drivers adopt safer habits
- Improve the productivity of your fleet and your people



Reduce fleet maintenance costs proactively

- Manage miles driven to preserve lease and warranty thresholds and slow depreciation
- Schedule preventive maintenance with greater accuracy
- Optimize fleet size by identifying under-utilized assets
- Prevent downtime and emergency service by monitoring voltage trend, ignition crank and other performance indicators
- Track and control speed to extend the life of gears, bearings, clutches, suspension and drive trains

Support smarter operations

Want to drive down costs at the pump? Roadnet Telematics can help you eliminate unnecessary miles driven, reduce engine idling, and promote efficient driving practices—all to reduce fuel consumption.



“Our number one priority is that our drivers get home safely every night. With the implementation of Roadnet Telematics, we’ve been able to see the drivers and their daily activities. Our speeding, idle time, and harsh braking events have decreased as a result.”

Alex Holian, Vice President of Operations
The Chefs’ Warehouse

- **Manage idling and speed:** both idling and speeding accelerate fuel consumption, oil changes, and engine wear. In-cab alerts help drivers minimize their idling, while exception notifications can alert supervisors of excessive idling.
- **Optimize fueling:** fuel only when needed to keep vehicles productive and cash flow on track.

Monitor risk and promote safety

Roadnet Telematics gives you powerful tools not only for monitoring risky driving behavior, but also for helping drivers eliminate it. Using seatbelts, controlling speed, limiting after-hours use—these are small changes that can mean huge savings for your business in avoiding injuries, vehicle damage and insurance claims.

- **See the big picture:** Roadnet Telematics lets you monitor a full spectrum of risk factors, including speed, harsh braking and rapid acceleration, seatbelt use, idle time, revving, stops per day, and after-hours use.
- **Help drivers change:** Real-time in-cab alarms alert drivers to speed, idling and seatbelt issues, promoting safer habits and reducing claims costs.



- **Reduce liability and workers compensation claims:** Accident memory and event-based recording capabilities let you recreate and verify at-fault, no-fault or workers’ compensation claims.

Optimize fleet effectiveness

By measuring the way time is spent throughout your fleet every day, you will better understand the quality of your time investment in your field force. Monitoring deviations in time and distance will help you initiate strategies for improved profitability and productivity through a greater understanding of how your customers are being served.

In addition, reducing speed and other factors that contribute to wear and tear, monitoring voltage and more can help you optimize your preventive maintenance schedule and eliminate unplanned downtime. Thanks to Roadnet Telematics, costs associated with out-of-service vehicles can be reduced by up to 25 percent.

Comprehensive reporting

Roadnet Telematics gives you the auditing and reporting tools needed to ensure accurate IFTA calculations and meet an increasing array of compliance obligations.

Roadnet Info Center[®]

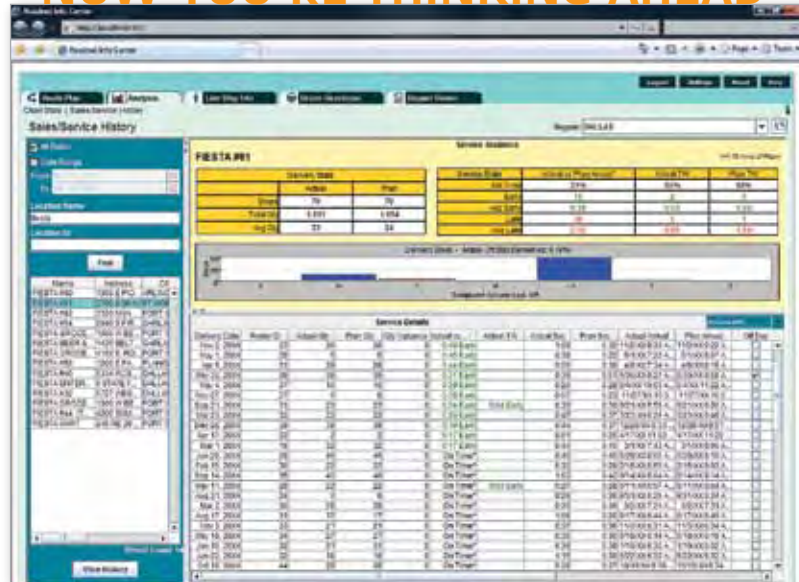
NOW YOU'RE THINKING AHEAD

ROADNET INFO CENTER AT A GLANCE

This enterprise-wide, information resource will help you:

- Make all key company transportation data instantly available to management and staff
- Enhance response time to customer inquiries for routing information
- Maintain constant linkage between the front office, the warehouse and your customers
- Analyze stop performance for each individual customer over a given time period
- Provide both historical and real-time information in actionable report formats
- View by exception, flagging only information that is off-plan
- Reduce costs by eliminating the need for paper documentation

By tapping into both the planned routing and real-time tracking data generated by the Roadnet Transportation Suite, Roadnet Info Center provides a full spectrum of critical intelligence for management, operations, customer service sales, and



other decision makers in your organization. Easily integrated into your company's existing intranet, Roadnet Info Center does not require special installation or a separate server, and can even reside on an individual desktop PC. Once installed, it can be configured quickly to meet your login and security requirements, set up user accounts and establish database configurations.

On-time support for decision-making

As an enterprise-wide package that supports up-to-the-minute decision-making, Roadnet Info Center provides your internal

audience with critical historical information such as:

- Route information for any route, any day or any stop
- Stop location attributes, including customer name, ID, driver, order number and date range
- Daily summary statistics, covering missed time windows, off-day deliveries, less than minimum loads and resource utilization
- Visual charts to compare daily costs and trends using plan, actual, plan vs. actual, date range and other summary stats
- Sales and service histories

“Are the right stops on the right routes? Are new customers being added without negatively impacting our existing customers? Roadnet, MobileCast and Roadnet Info Center help us easily measure this.”

Jennifer Caplinger, Logistics Manager
Coastal Sunbelt Produce

← **What's the score?** The Roadnet Info Center offers you a broad choice of management tools, including “scoreboards” that provide a complete overview of Sales and Service History for each of your customers. By selecting an individual customer, you can gain immediate access into such key information as planned versus actual stats in arrival and departure times, designated deliveries versus off-day deliveries, daily on-time versus late deliveries, and other critical service details.

- Live stop information and vehicle location

Roadnet Info Center also can serve as a powerful platform for your customer service department by providing instant access to route status and accurate customer arrival or appointment times.



Roadnet® Performance Dashboard

POWER YOUR BUSINESS WITH INTELLIGENCE

ROADNET PERFORMANCE DASHBOARD AT A GLANCE

This strategic information solution provides:

- A graphical representation of key performance measurements
- The means to identify trends and make necessary corrections
- Tools to measure efficiencies and spot inefficiencies
- Access to historical data for better decision-making
- Improved productivity through shared information
- A “green” alternative to printed reports
- 85 different data elements for reporting
- Completely customizable views
- Cross-regional reporting

More transportation intelligence per mile

Want to get the big picture of your fleet operations? Then stop thumbing through spreadsheets and look to Roadnet Performance Dashboard. This tool delivers the critical transportation information you need for informed decision-making,



organized through one, easy-to-read Web-based solution.

Roadnet Performance Dashboard provides a commanding perspective on all of your critical operational information, using easy-to-understand visual indicators such as charts, graphs and gauges. With its fully customizable dashboard, you can view a day, a year or a decade of historical data to inform your decisions. For true custom reporting, Roadnet Performance Dashboard employs 85 different data elements that are critical to your operations, including:

- Miles to date
- Routes year to date
- Missed time windows
- Total number of orders

Along with this flexible reporting, you can access several pre-defined dashboards, so you can start measuring your operations against company missions, goals and priorities right away to determine next steps to boosting productivity.

Reporting value

As a business intelligence platform, Roadnet Performance Dashboard immediately adds

value to your operations. Customize reports specific to your organization. Monitor key metrics in a single view. Instantly transform raw data into interactive and intuitive reports. It's all available in just a few clicks. Other value-added functions include the ability to:

- Quickly access transportation data without opening Roadnet or MobileCast
- Compare and rate regions
- View plan, actual or actual vs. plan data
- Track trends on multiple levels
- Display data on routes, stops, exceptions and much more

“Roadnet Performance Dashboard provides us with visibility into our actual vs. planned route information on a company-wide level—giving all branches knowledge about the entire company's transportation performance.”

Glenn Barker
Supply Chain Project Manager, Glazers Wholesale Drug Co.

Because the Roadnet Performance Dashboard is equipped with several pre-defined dashboards, as well as powerful tools to create your own custom views of the data using any of the available 85 different data elements, you can start measuring your operations against your company's missions, goals and priorities immediately to determine the efforts needed to maximize your performance.

At Roadnet Technologies, we're all about results—yours.



In today's world, with soaring transportation costs and increased competition, you need a partner for the road ahead—a partner who will help you achieve the results needed to sustain and grow your business, raise employee productivity, tap into new efficiencies, and ensure safety standards. For transportation service companies large and small around the world, that partner is Roadnet Technologies.

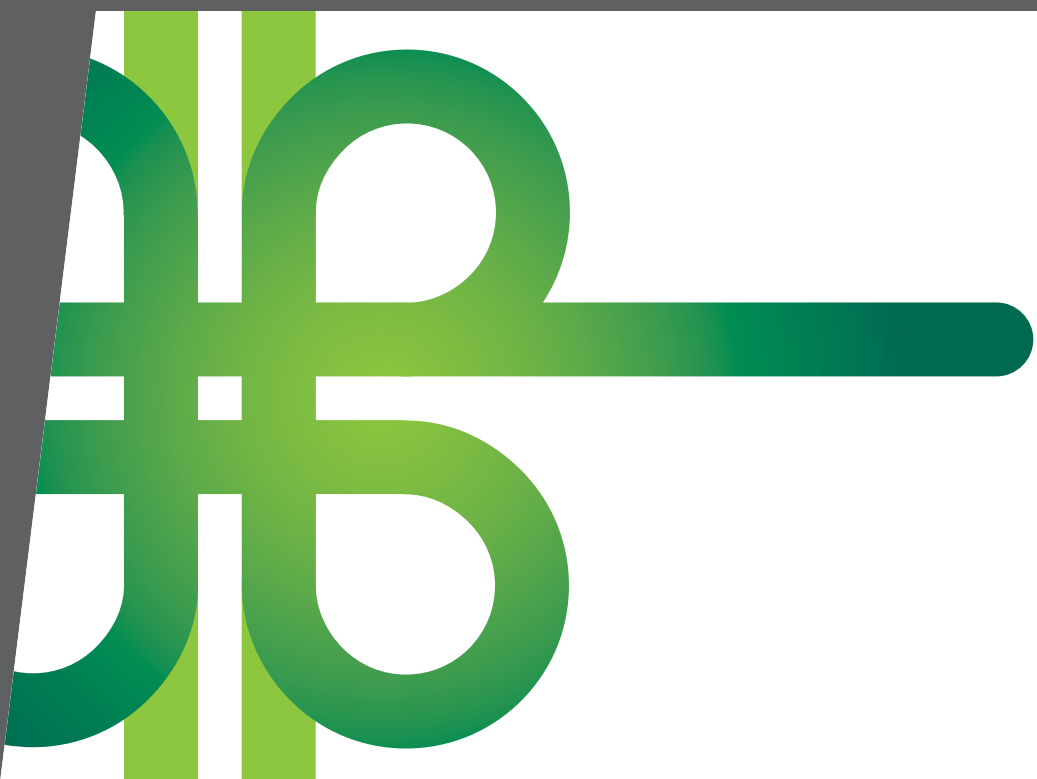
That's because at Roadnet Technologies, we know fleet management best—from the loading dock to your customer's front door and all the miles in between. After more than 25 years of solid experience, we are now the international industry leader in transportation management solutions, with the reputation, financial stability and leading products to back it up. Other providers today are unable to match our

track record for delivering measurable results to companies like yours by solving complex transportation issues.

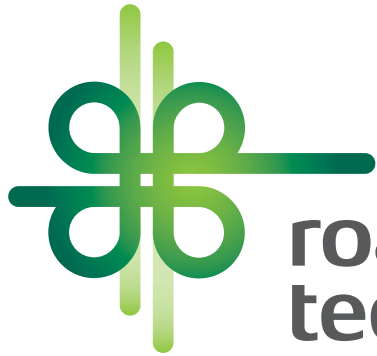
Through advancements within the Roadnet Transportation Suite, we continue to make good on that promise, with global solutions that provide territory planning, street-level route optimization, mobile delivery execution, GPS Tracking, real-time wireless dispatch and vehicle telematics. By deploying this comprehensive set of integrated applications, your transportation staff can quickly gain control over every aspect of your order-to-customer process. We also provide you and your employees with the highest standard of dedicated customer service—24/7, 365 days a year, as well as advanced product training through onsite seminars or our Roadnet University.

That's why you'll find our products in daily use at more than 3,400 locations worldwide, optimizing fleet management for over 200,000 vehicles each day. Whether your delivery and service operations involve beverages, foodservice, dairy, bakery, paper, medical supplies, fuel oil and propane, textile linens or other products, Roadnet Technologies has a solution for you—based on decades of research and experience within your industry.

Let's create a new standard of operational success for your business. Find out what we can we accomplish together—contact us today at info@roadnet.com or 800.762.3638.



How to deliverSM



**roadnet
technologies™**

How to deliverSM

Roadnet Technologies, Inc.
849 Fairmount Avenue, Suite 400
Baltimore, MD 21286

800.762.3638
info@roadnet.com
www.roadnet.com

